

/ ALDO /

FRASER RISE



BUY FROM
\$405[^] PER WEEK

FIRST HOME BUYERS PAY
\$502,900*

NARLA 20 - Crest

4 2 2

LOT 318 (313m²)
\$512,900**

tickHOMES

Crafted to suit more compact blocks, this home is free-flowing and spacious. Design-wise, it achieves the seemingly impossible. Just kick back and appreciate the awesome contemporary living it delivers. Four bedrooms. Tick. Double garage. Tick. Entertainer's kitchen. Tick.

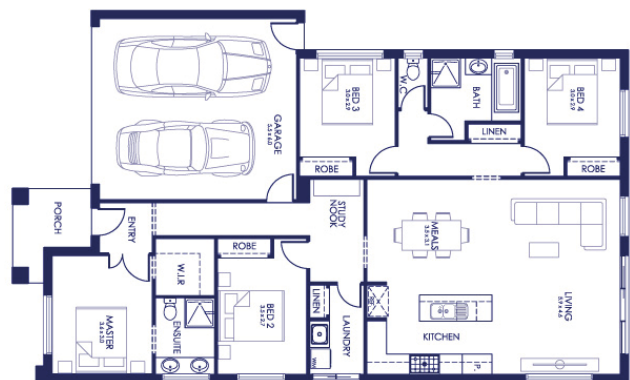
DIMENSIONS (m)

House Area: **183.33**
House Length: **18.71**
House Width: **11.27**

LAND DIMENSIONS (m)

Land Area: **313.0**
Frontage: **12.5**

- / Fixed site costs and connections
- / Council and developer requirements
- / 20mm Caesarstone benchtops to kitchen
- / 2590mm high ceilings to ground floor
- / 900mm stainless steel appliances
- / Floor coverings throughout
- / Flyscreens and window locks to openable windows
- / Ducted heating
- / Remote controlled garage door
- / Colour-through concrete driveway and path



**The time is now to secure
your place at Aldo**

Call 1300 253 637
aldoestate.com.au

Visit Our Sales Centre Open 7 Days 11am-5pm
1063 Melton Hwy, Plumpton (Fraser Rise)

**Price current as of 03/07/2019 Pricing based on Developer supplied engineering plans and plan of subdivision and Tick Homes standard floor plan with pre-determined façade and preferred siting (w/o alterations, alterations may incur additional charges). Subject to developer and council approval. Package price does not include stamp duty, government, legal or bank charges. *Pricing includes FHOG and is subject to SRO criteria (refer www.sro.vic.gov.au/first-home-owner#fhog). ^Weekly repayment calculated on 90% of total package price, less FHOG, with interest rate of 3.98% (refer tickhomes.com.au/terms-and-conditions/ for full conditions). #Price refers to the Tick Max Investor range. Tick Homes reserves the right to withdraw or amend pricing, inclusions and promotion without notice. Speak to your New Home Advisor for more information. VIC Builder's Licence: CDB-U 61609. ©2019 Tick Homes Pty Ltd.